

AUTOL



**WORLD LEADING AUTOMATIC LUBRICATION
SOLUTIONS SUPPLIER**



ABOUT AUTOL



1

No.1 brand of centralized lubrication in China. Annual production capacity 200,000 sets.



10

10 CNAS certified laboratories. Provide comprehensive and professional laboratory testing services.



70+

AUTOL products are exported to more than 70 countries and regions.



100+

More than 100 R&D personnel.



300+

Acquired more than 300 technical patents at home and abroad. Widely used in construction machinery, wind power, commercial vehicles, mining, port equipments and many other fields.

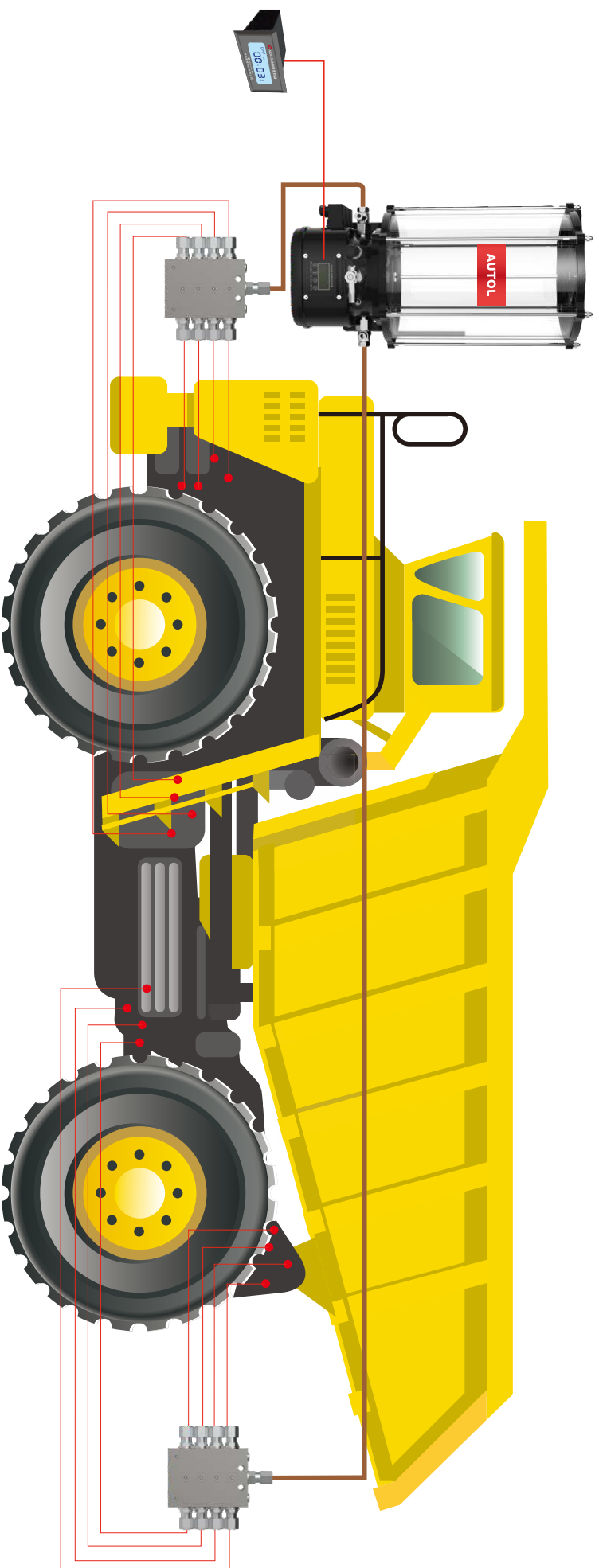


800K+

Up to now more than 800,000 sets of installed lubrication equipments with various models are in operation.



AUTOMATIC LUBRICATION SYSTEM FOR DUMP TRUCKS



System composition



Model	SSVA Series
Maximum pressure	350bar
Number of outlets	6-22 pcs
Start-up pressure	20bar
Grease output	0.2ml/cy
Operation temperature	-30°C~70°C
Applicable grease	NLGI-0#,1#,2#



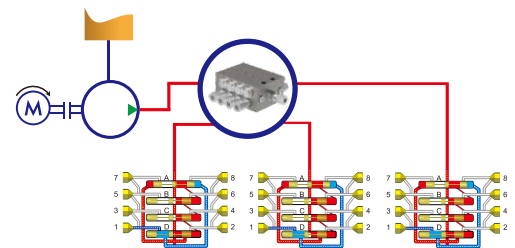
Monitor	AK06/AK07
Installation position	Internal /External
Interval period	1--30h
Operation time	1--99min
Alarm code	EE-1 (low level)/EE-2 (system malfunction)/C-number (low temperature protection)
Communication function	Integrated CAN bus. Wireless bluetooth control



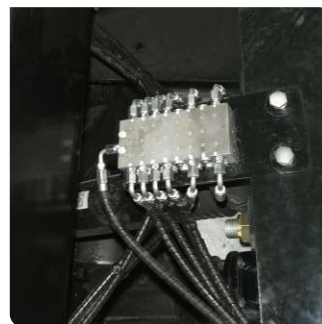
Model	ALPB120 Series
Maximum pressure	350bar
Grease output	1.5, 2.5, 4.5 ml/min
Rated voltage	DC24V/DC12V
Operation temperature	-30°C~70°C
Applicable grease	NLGI-0#,1#,2#
Reservoir	4L-20L

Operation principle

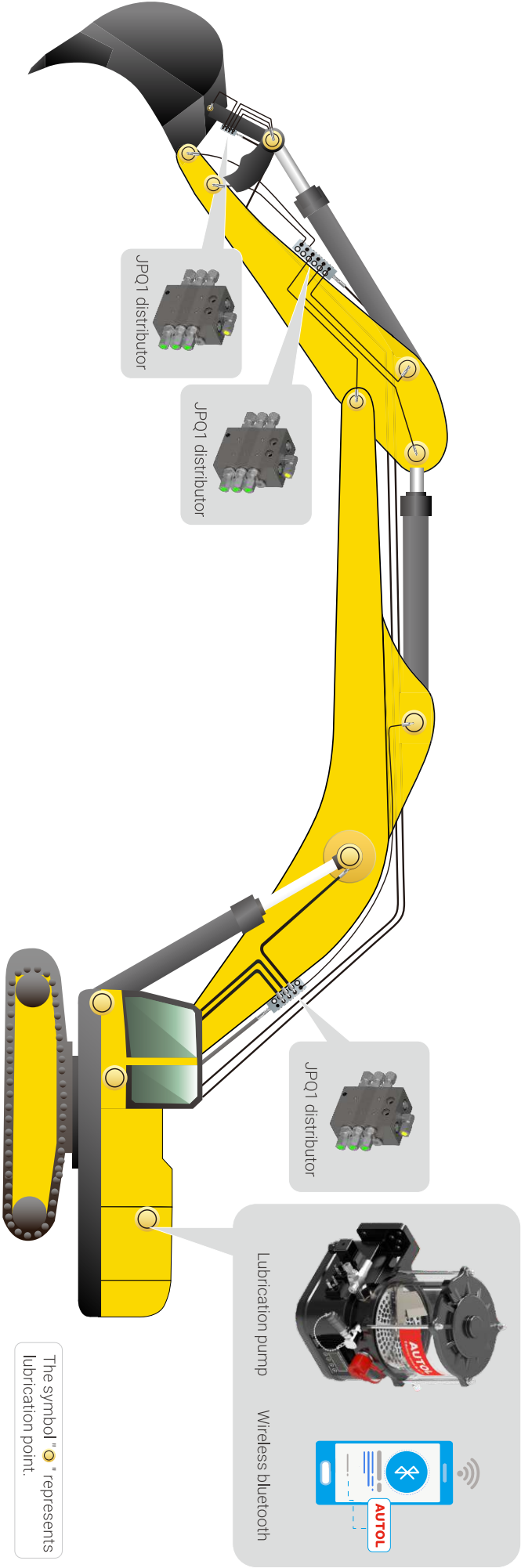
When the lubrication pump is powered, motor drives plungers to move back and forth. Pressurized grease enters distributor via resin tube. The plungers move in order under the action of pressure to distribute the grease to each lubrication point.



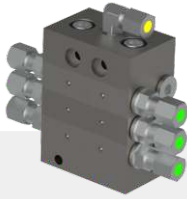
Application cases



AUTOMATIC LUBRICATION SYSTEM FOR EXCAVATORS(≤50T)



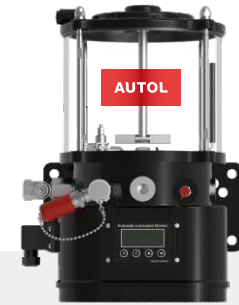
System composition



Model	JPQ1 Series
Maximum pressure	300bar
Number of outlets	6-22 pcs
Start-up pressure	20bar
Grease output	0.08~1.60ml/cy (adjustable)
Operation temperature	-30°C~70°C
Applicable grease	NLGI-0#,1#,2#



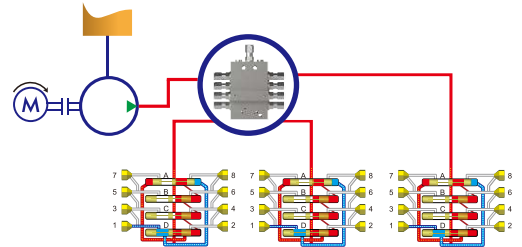
Monitor	AK06/AK07
Installation position	Internal/External
Interval period	1~30h
Operation time	1~99min
Alarm code	EE-1 (low level)/EE-2 (system malfunction)/C-number (low temperature protection)
Communication function	Integrated CAN bus. Wireless bluetooth control



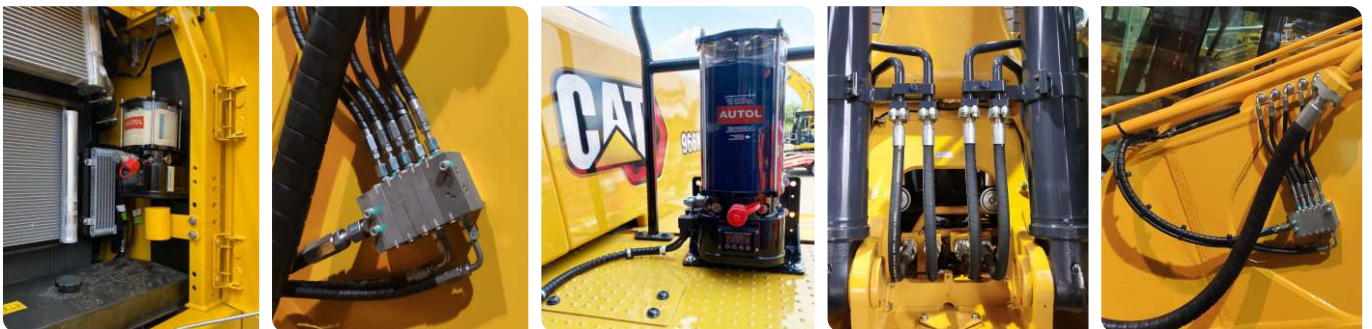
Model	ALPB100 Series
Maximum pressure	350bar
Grease output	1.5, 2.5, 4.5 ml/min
Rated voltage	DC24V/DC12V
Operation temperature	-30°C~70°C
Applicable grease	NLGI-0#,1#,2#
Reservoir	2L-4L

Operation principle

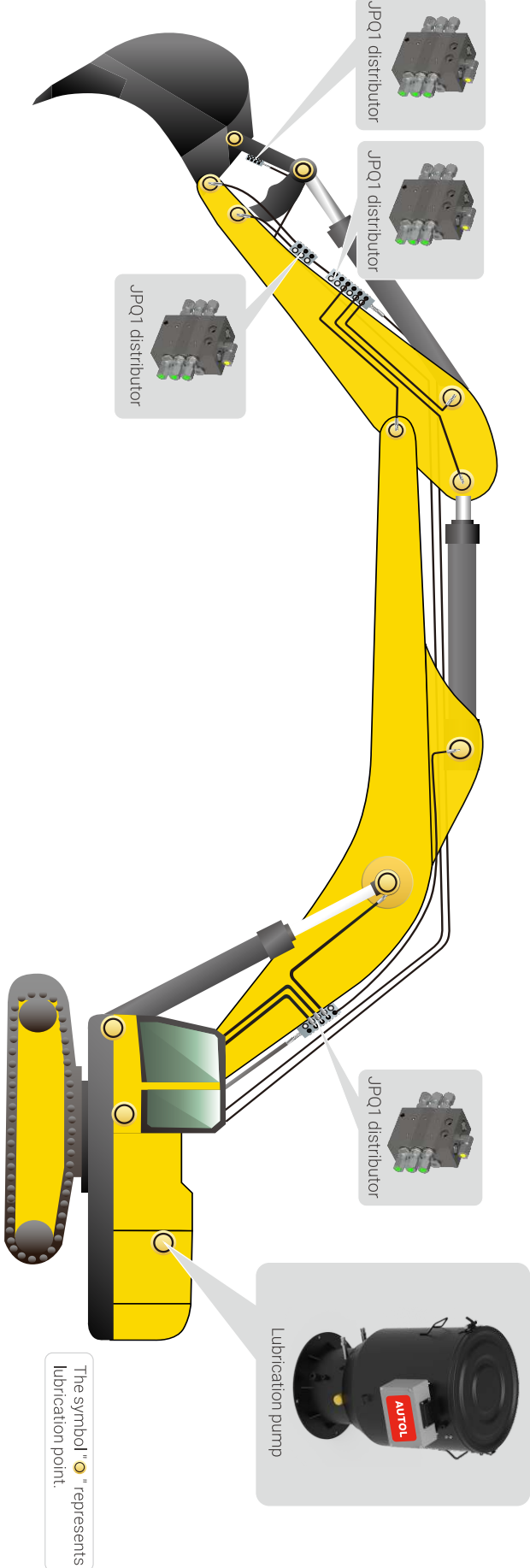
When the lubrication pump is powered, the motor drives the plunger in the pump to move back and forth. The grease is pressurized into the distributors via the main tube. The pistons in the distributors move one by one under the high pressure, and then the grease is distributed into each lube point.



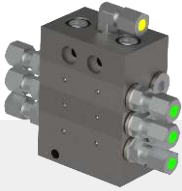
Application cases



AUTOMATIC LUBRICATION SYSTEM FOR EXCAVATORS (50T-170T)



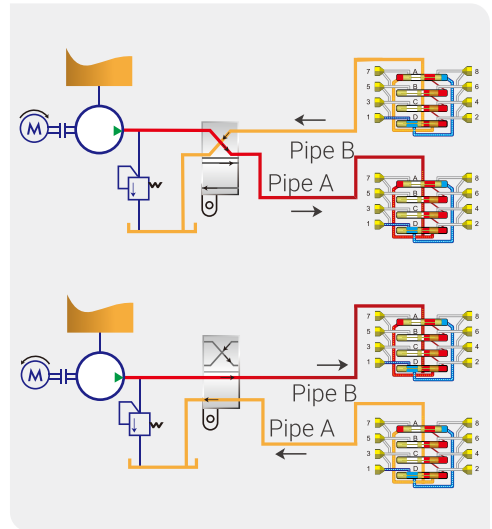
System composition



Model	JPQ1 Series
Maximum pressure	300bar
Number of outlets	6~22pcs
Start-up pressure	20bar
Grease output	0.08~1.60ml/cy (adjustable)
Operation temperature	-30°C~70°C
Applicable grease	NLGI-0#,1#,2#

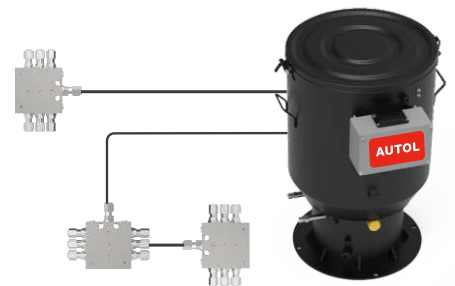


Model	ADPB pump
Maximum pressure	400bar
Grease output	20ml/min
Rated voltage	DC24V
Operation temperature	-30°C~70°C
Rated power	300W
Reservoir	20L~60L

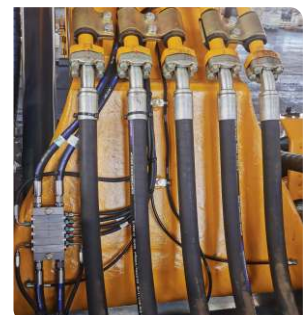
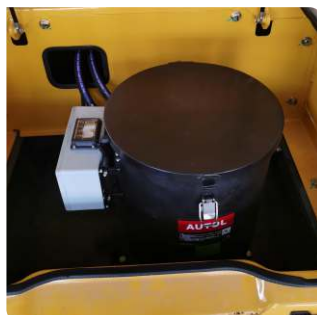


Technical advantages

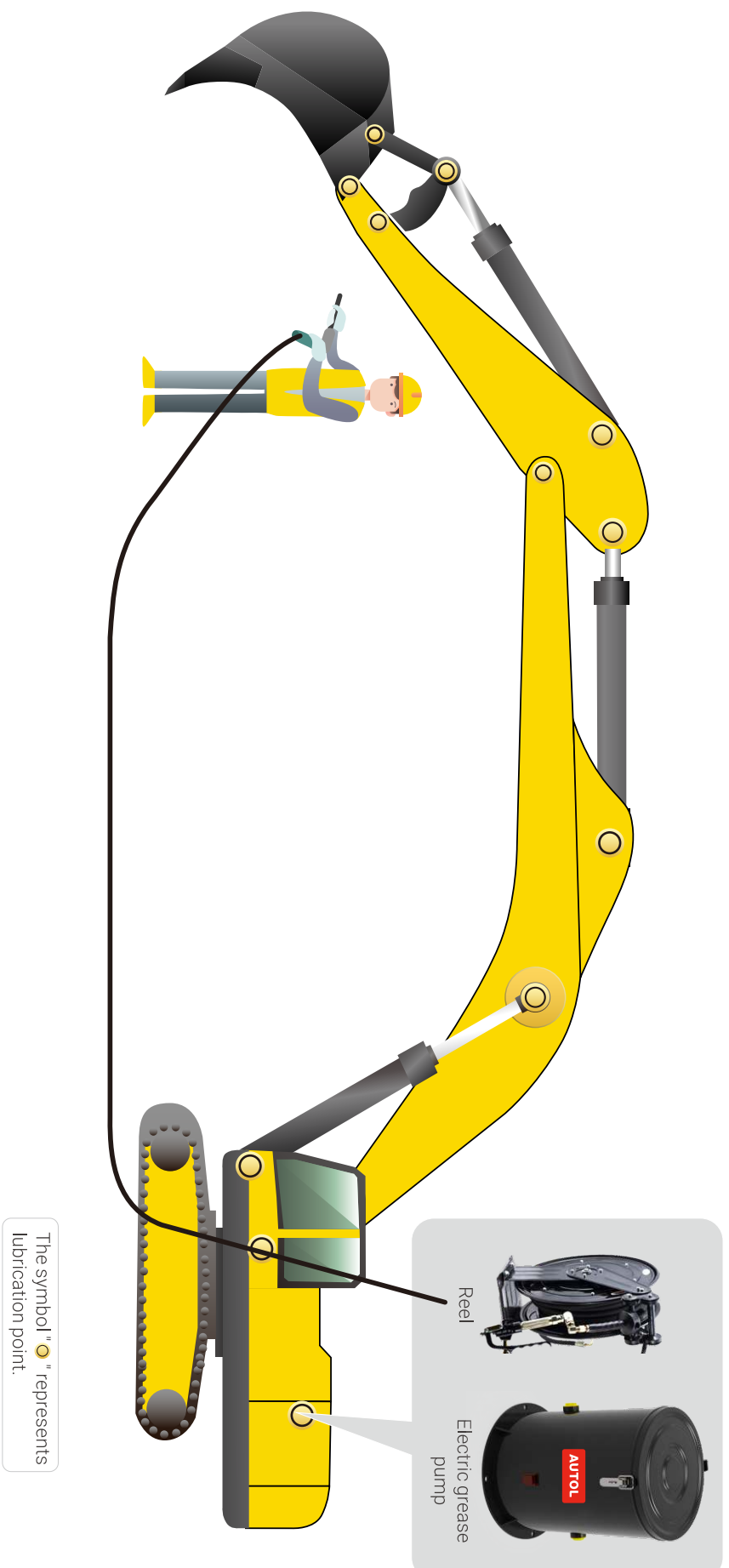
- The output of grease volume can be dynamically adjusted according to different working conditions, temperature and lubrication points;
- Special high power brushless motor;
- Three reservoir volume available - 20L, 40L and 60L;
- Double grease outlets structure, each outlet can control grease output independently;
- Refill grease quickly through the upper lid of the pump.



Application cases



SEMI AUTOMATIC GREASER FOR EXCAVATORS (30T-120T)



System composition



Maximum pressure	500bar
Overall dimensions	520(L)×300(W)×532(H)mm
Tube length	10m



Model	ADJ300TW
Maximum pressure	400bar
Grease output	300ml/min
Rated voltage	DC24V
Motor input power	600W
Machine weight	15Kg
Reservoir	20L

Applicable grease:
 T>10°C :2#;
 -10C≤T≤10°C :1#~2#;
 T<-10°C:0#~1#;
 T>20°C:3#.

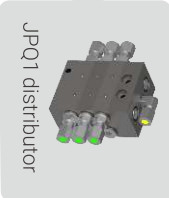
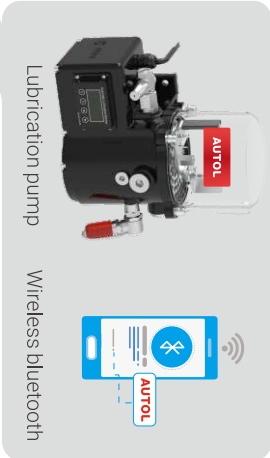
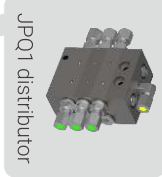
Technical advantages

- Special high power brushless motor;
- High pumping pressure and refilling efficiency;
- 20L large capacity reservoir;
- Large flow 300ml/min;
- Superior property,easy operation;

Application cases

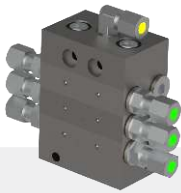


AUTOMATIC LUBRICATION SYSTEM FOR LOADERS



The symbol "●" represents lubrication point.

System composition



Model	JPQ1 Series
Maximum pressure	300bar
Number of outlets	6-22 pcs
Start-up pressure	20bar
Grease output	0.08~1.60ml/cy (adjustable)
Operation temperature	-30°C~70°C
Applicable grease	NLGI-0#,1#,2#



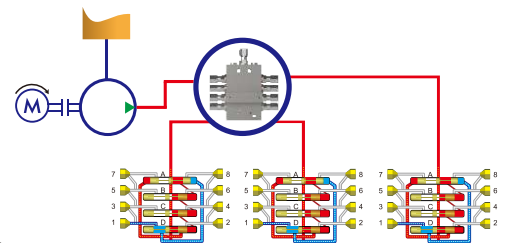
Monitor	AK06/AK07
Installation position	Internal / External
Interval period	1~30h
Operation time	1~99min
Alarm code	EE-1 (low level)/EE-2 (system malfunction)/C-number (low temperature protection)
Communication function	Integrated CAN bus. Wireless bluetooth control



Model	ALP80 Series
Maximum pressure	350bar
Grease output	1.5, 2.5, 4.5ml/min
Rated voltage	DC24V/DC12V
Operation temperature	-30°C~70°C
Applicable grease	NLGI-0#,1#,2#
Reservoir	1L-2L

Technical advantages

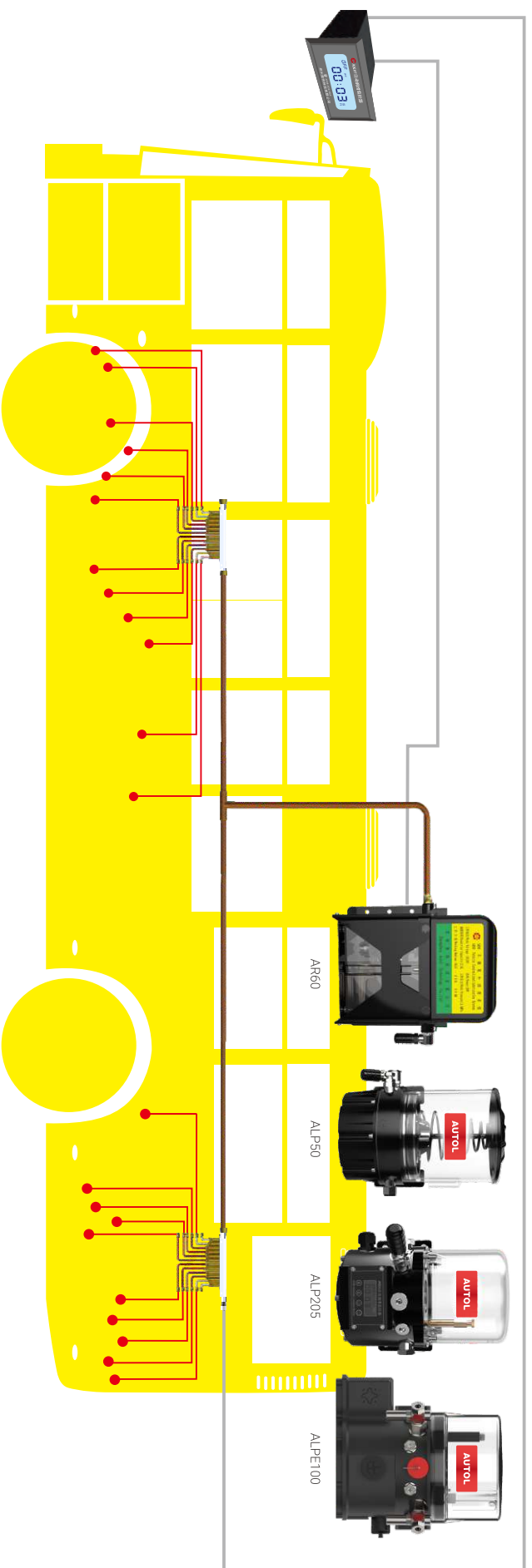
- Integrated CAN bus technology for data exchange ;
- Wireless control, enabling real-time detection of system status through bluetooth;
- 1-20 times of single-hole grease ratio for various grease demands of different parts;
- Accurate grease distribution and stable low-temperature performance.



Application cases



AUTOMATIC LUBRICATION SYSTEM FOR COMMERCIAL VEHICLES



System composition



Model	Single line type
Maximum pressure	63bar
Number of outlets	1~22 pcs
Grease output	0.13,0.2,0.4ml/cy
Operation temperature	-30°C~70°C
Applicable grease	NLGI-000#,00#,0#

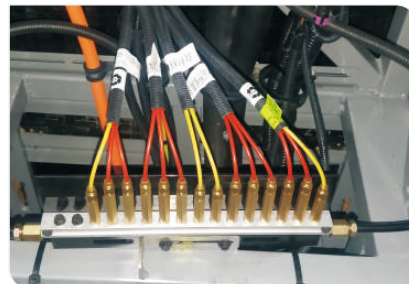
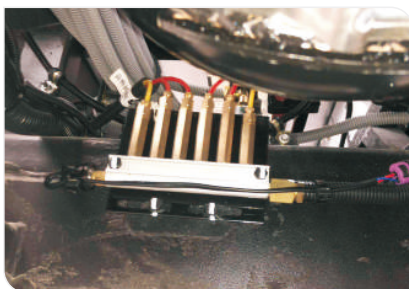


Monitor	AK07
Installation position	External
Interval period	1~30h
Operation time	1~99min
Alarm code	EE-1 (low level)/EE-2 (system malfunction)/C-number (low temperature protection)
Communication function	Integrated CAN bus. Wireless bluetooth control



Model	ALP502
Maximum pressure	45bar
Grease output	55ml/min
Rated voltage	DC24V/DC12V
Operation temperature	-30°C~70°C
Applicable grease	NLGI-000#,00#,0#
Reservoir	2L

Application cases



ABDB SERIES MULTI LINE PUMP

The ABDB05 multi-line pump can supply lubricant directly to lubrication points or can be used as a centralized lubrication pump in large-sized progressive systems. It can drive up to five elements, which are available in varying sizes for optimum adjustability. The pump's drive and eccentric shaft design, high-efficiency worm gear, minimal number of parts and multi-range motor provide several advantages. ABDB05 pumps are available with a three-phase flange mount and multi-range motor or with a free shaft end for use with other motors. Various gear ratios and reservoir sizes with or without level control are offered.



Model	ABDB05 Series
Number of outlets	1~5 pcs
Operating temperature	-20°C~70 °C
Lubricants	oil: viscosity of at least 40 mm ² /s grease: up to NLGI 2
Operating pressure	max 350 bar
Reservoir capacity	5L,10L,20L
Output	0.075ml/cy,0.125ml/cy,0.225ml/cy 0.035ml/cy~0.15ml/cy (adjustable)
Drive	gear motor, 0.12 kW
Ratio	70:1,300:1
Electrical connection	multi-phase motor : 380-420 VAC / 50 Hz; 440-480 VAC / 60 Hz; single-phase motor: 500VAC/50Hz
Protection class	IP55

The ABDB12 multi-line pump that can drive up to 12 elements. It is capable of handling direct supply of lubrication points in multi-line systems or can be used as a centralized lubrication pump in large-sized progressive systems. The drive and eccentric shaft design, high-efficiency worm gear and minimal number of parts provide the pump with several advantages. ABDB12 pumps are available with a powerful, three-phase, multi-range motor. Suitable for both grease and oil, the reservoir is offered with or without level control.



Model	ABDB12 Series
Number of outlets	1~12 pcs
Operating temperature	-20°C~70 °C
Lubricants	oil: viscosity of at least 40 mm ² /s grease: up to NLGI 2
Operating pressure	max 350 bar
Reservoir capacity	30L
Adjustable Output	K7 (0.1 ml/cy ~ 0.36 ml/cy) K12 (0.29 ml/cy ~ 1.05 ml/cy)
Drive	gear motor, 0.75 kW
Ratio	60:1
Electrical connection	multi-phase motor : 380-420 VAC / 50 Hz; 440-480 VAC / 60 Hz; single-phase motor: 500VAC/50Hz
Protection class	IP55

ABDB SERIES MULTI LINE PUMP

The ABDB15 multi-line pump that can drive up to 15 pump elements. Different sizes of adjustable elements are available. It is capable of handling direct supply of lubrication points or can be used as a centralized lubrication pump in large-sized progressive systems. ABDB15 pumps are available with a three-phase, multi-range motor, with a single-range motor, with a free shaft end for use with other motors, or with an oscillating drive. Various gear ratios and reservoirs of different sizes and materials are available. The reservoirs are suitable for both grease and oil and are offered with or without level control.



Model	ABDB15 Series
Number of outlets	1~15 pcs
Operating temperature	-20°C~70 °C
Lubricants	oil: viscosity of at least 40 mm ² /s grease: up to NLGI 2
Operating pressure	max 350 bar
Reservoir capacity	30L,60L,100L
Adjustable Output	K6 (0.033 ml/cy ~ 0.16 ml/cy) K7 (0.045 ml/cy ~ 0.23 ml/cy)
Drive	gear motor, 0.25 kW
Ratio	7:1 (only for free shaft), 50:1,100:1,500:1
Electrical connection	multi-phase motor : 380-420 VAC / 50 Hz; 440-480 VAC / 60 Hz; single-phase motor: 500VAC/50Hz
Protection class	IP55

A derivative of the ABDB15 pump, the ABDB30 multi-line pump that can drive up to 30 adjustable pump elements. It is used within a multi-line system to directly supply lubrication points or within large-sized progressive systems. Due to the increased number of possible pump elements compared to the ABDB15, a powerful 0.25 kW motor is used.

ABDB30 pumps are available with a three-phase, multi-range motor or a single-range motor, and various gear ratios are offered. Suitable for grease or oil, reservoirs are available in different sizes with or without level control.



Model	ABDB30 Series
Number of outlets	1~30 pcs
Operating temperature	-20°C~70 °C
Lubricants	oil: viscosity of at least 40 mm ² /s grease: up to NLGI 2
Operating pressure	max 350 bar
Reservoir capacity	30L,60L,100L
Adjustable Output	K6 (0.033 ml/cy ~ 0.16 ml/cy) K7 (0.045 ml/cy ~ 0.23 ml/cy)
Drive	gear motor, 0.25 kW
Ratio	7:1 (only for free shaft), 50:1,100:1,500:1
Electrical connection	multi-phase motor : 380-420 VAC / 50 Hz; 440-480 VAC / 60 Hz; single-phase motor: 500VAC/50Hz
Protection class	IP55

ATK-06 CONTROL CABINET

Control cabinet is the control center of lubrication system, and its core control component is PLC, which could control each electrical part of the centralized lubrication system. The operating status of the system is monitored in real time through the touch screen.



● Technical advantages

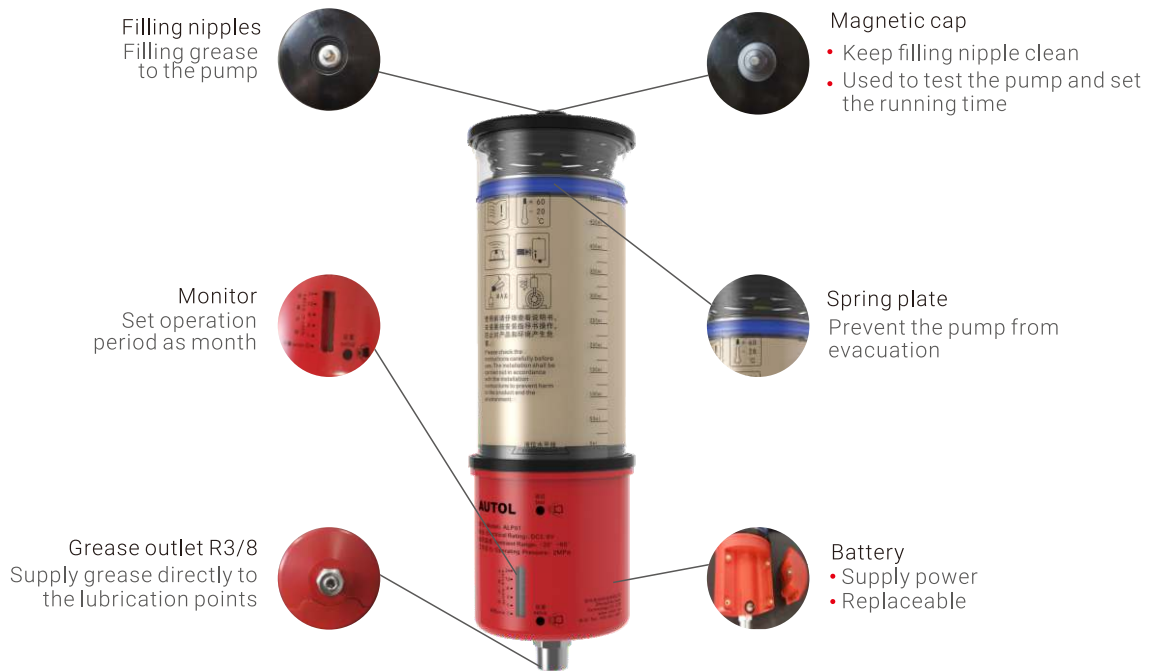
- During the automatic operation of the equipment, when grease is supplied to each lubricating point, the touch screen on the control cabinet (PLC) will display the grease supply time and the actual amount of grease supplied at that point;
- Each lubrication point can set cycle interval time and the amount of lubrication grease through the touch screen;
- After the system enters the cycle interval time, the touch screen on the control cabinet (PLC) will display the countdown of the interval time, so as to clearly indicate the current equipment operating status.

● Product parameters

Power supply	AC380V 50Hz three-phase four-wiresystem
Control mode	Automatic / Manual
Alarm signal	Liquid level high and low, block signal
Communication method	Rs485
Cycle interval time	0h 1min~999h 59min (adjustable)
Grease supply time	1~255 seconds (adjustable)

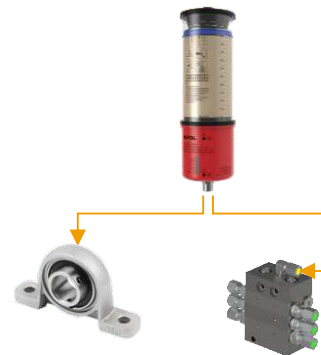


SINGLE POINT AUTO LUBRICATOR



Application

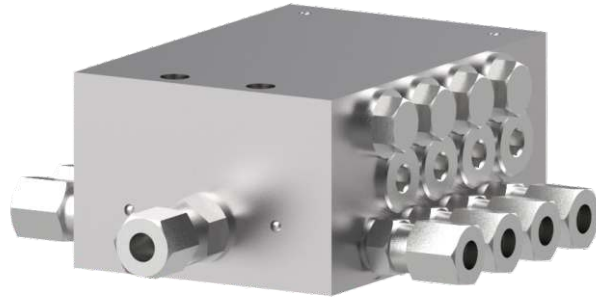
Places with narrow space and only remote installation available; places where bearings are seriously worn after being polluted by dirt or dust; places where oil needs to be filled frequently but is not easy to be filled; and all industrial bearings that require lubrication grease to be filled.



Product parameters

Maximum pressure	40bar	Outlet connector specification	R3/8 (male)
Delivery capacity per stroke	0.24ml	Operation mode	Run out of grease in reservoir 1/3/6/12/24 months (5 modes)
Battery voltage	3.6V lithium battery (replaceable)	Outline size	285mm×85mm (500ml) 225mm×85mm (250ml) 195mm×85mm (120ml)
Reservoir Capacity	500ml/250ml/120ml (Grease can be added into it repeatedly)	Control mode	Controlled by built-in monitor
Applicable temperature	-20°C~60°C	Display mode	Displayed by LED indicator
Applicable grease	Grease up to NLGI-2		
Protection class	IP65		

SSVD DISTRIBUTOR (OUTPUT ADJUSTABLE)

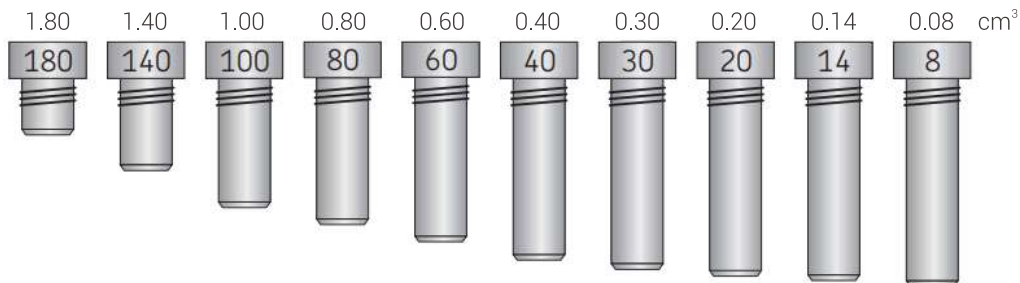


Product parameters

Maximum operating pressure	350bar	Material version	Nickel-zinc plated steel
Minimum operating pressure	20bar	Function monitoring	HALL Sensor
Number of outlets	6-22 pcs	Ambient temperature range	-30°C~70°C
Inlet thread/Outlet thread	M10×1	Applicable grease	NLGI 000# ~ 2#
Connectable lubrication hose	Ø 6	Suitable lubrication grease viscosities	Lubrication grease of at least 40 mm ² /s at ambient temperature
Metering volume per stroke and outlet	The metering volume is adjusted via metering screws and amounts to maximum 1.8 cm ³ per stroke		

SSVD metering screws

The output of the SSVD divider can be adjusted by using different metering screws.



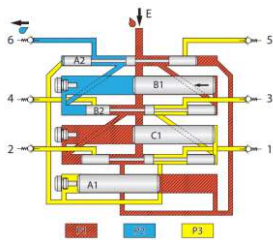
● Course of the lubricant in the SSVD divider

The SSVD 6 divider is used as an example to show the piston movements and the lubricant supply to the individual outlets.

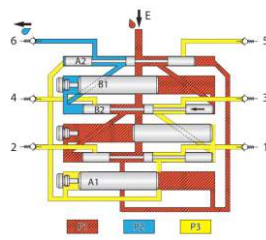
P1—Lubricant supplied by the lubrication pump

P2—Lubricant displaced by the piston of the metering device

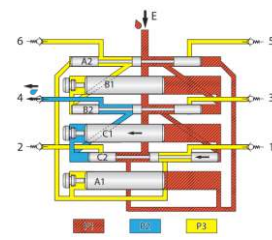
P3—Lubricant not being moved.



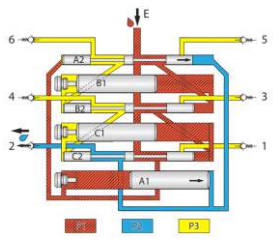
Phase 1



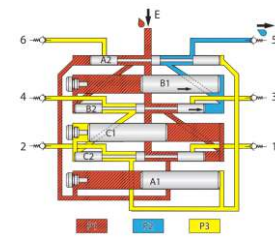
Phase 2



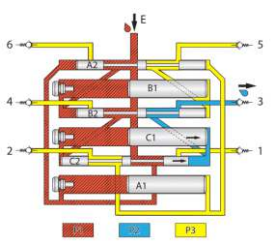
Phase 3



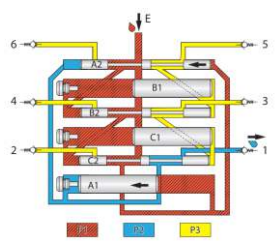
Phase 4



Phase 5



Phase 6



Phase 7

OUR BUSINESS NETWORK

Providing customers with excellent products and perfect services is the driving force of our unremitting pursuit. We provide users with "first-time" technical services and arrange regular inspection mechanism.

- Professional training service before use;
- Installation and trial run guidance;
- Training services on basic operation and daily maintenance;
- One year quality guarantee,life time repair service.
- We have well organized after-sales network,and our professional engineers and partner distributors will response to your questions timely.



OUR PARTNERS





ZHENGZHOU AUTOL TECHNOLOGY CO., LTD
No.96, Hehuan Street, High-Tech District, Zhengzhou, China
Web: www.autolgroup.com www.autol.net **E-mail:** info@autol.net